



GIS SERVICES

WHAT CAN **GIS** DO FOR YOU?

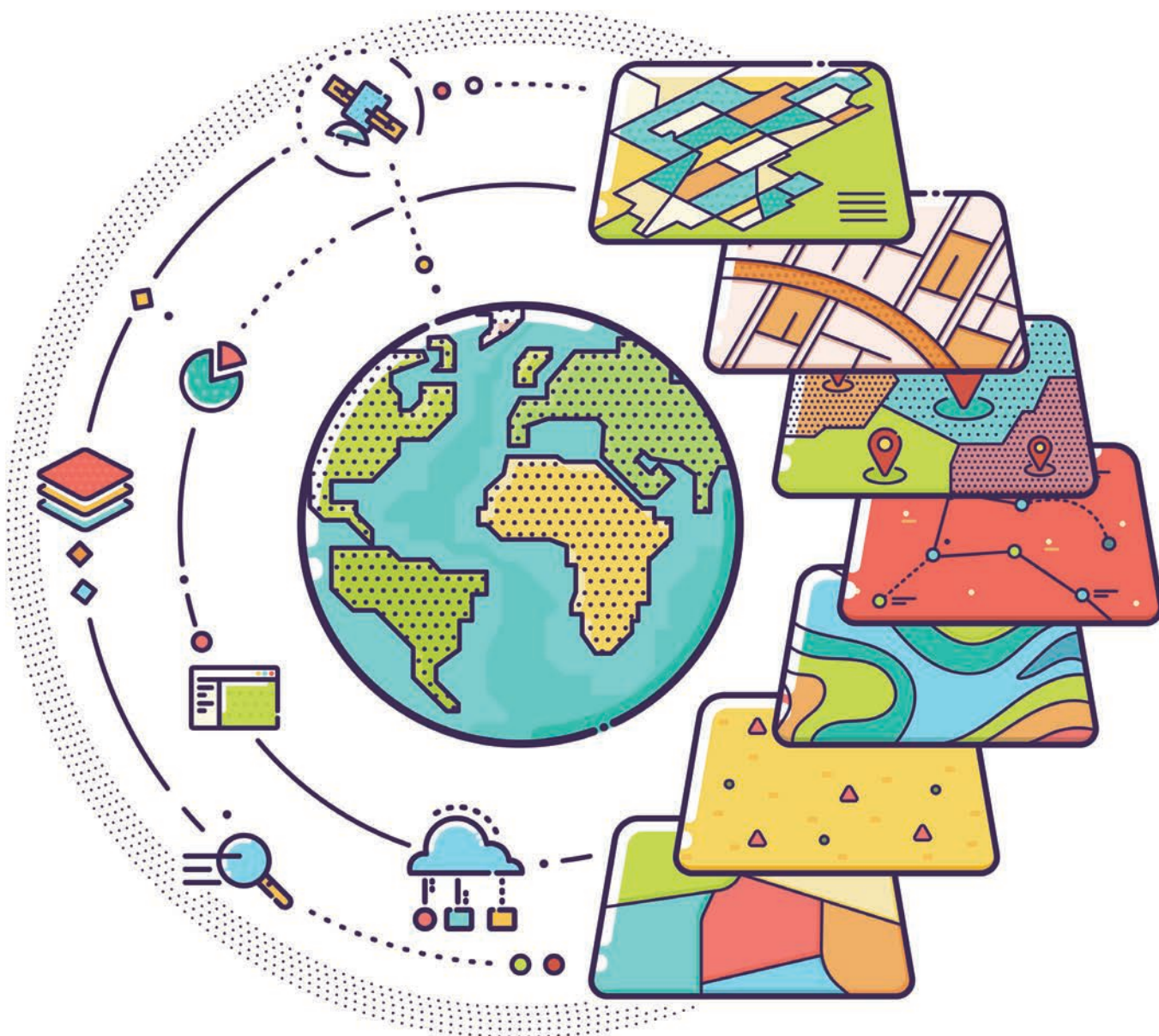


WHAT IS GIS?

A Geographic Information System (GIS) is a system designed to capture, store, manage, analyze, and visualize spatial data. This system is a powerful tool that can drive decision-making within an organization and provide the vision to guide decision makers and managers in the following areas:

- **Asset Management**
- **Capital Improvement Planning**
- **Site Planning**
- **Economic Development**
- **Zoning**

Maintaining or creating a GIS for the first time can feel like a daunting task and one that keeps many organizations from ever taking those first steps toward doing so. Here at **Moore+Bruggink**, we like to break down this process into three manageable phases.



THREE MANAGEABLE PHASES

COLLECT

Whether you're working with utility systems, a treatment plant, roads, buildings, parks, or cemeteries, you have assets with fixed coordinates that can be collected and fed into a GIS for management. Using a high-precision GPS or other source materials, **Moore+Bruggink** has the experience and knowledge to efficiently collect and enrich the locational data with attribute data to create a dynamic dataset that fits your needs.



- [GPS Collection](#)
- [As-Built Conversions](#)
- [CAD Conversions](#)
- [Document Scanning](#)

MANAGE

A carefully architected GIS is vital for the fruitful management of your assets and positive impact within your organization. It doesn't matter if your organization already has a GIS or is just getting started, **Moore+Bruggink** can partner with you to help build a system from the ground up or look for ways to grow and improve upon your current one. **Moore+Bruggink** can also train your staff and provide hosting and on-going support to keep your system running smoothly.



- [System Architecture Design & Implementation](#)
- [Database Design](#)
- [Updates to Datasets](#)
- [As-Built / Document Linking](#)

SHARE

The advent of Web GIS has dramatically expanded the audience you can reach when sharing your data. Interactive web maps and applications will change the way you not only share but access critical data. Put project-centric data in the hands of your shareholders and clients and enable your field workers to access the information they need, when they need it. GIS allows an organization to increase efficiency by interconnecting workflows and providing a secure, centralized location for authoritative content with easy access.



- [Static Maps](#)
- [Web Maps](#)
- [Apps](#)
- [Web Browsers](#)
- [Mobile Devices](#)
- [Cloud-Based Services](#)

CITY OF ZEELAND

Moore+Bruggink partnered with the City of Zeeland's Clean Water Plant to bring them a comprehensive approach for viewing and accessing vital information needed in the management of their sanitary system. Collecting locations of assets in the field using a high-accuracy GPS unit, paired with linking As-Built documents to these assets creates a clear overall picture of their system. Using web-based GIS technologies gives them the access to this information anytime, anywhere.

“Moore+Bruggink's GIS system provides quick and easy access to data in the field. The user-friendly web map display is simple to navigate and allows for efficient productivity with our staff.”

~ Doug Engelsman
Zeeland Clean Water Plant
Superintendent



Easily access linked As-Built drawings on any device.

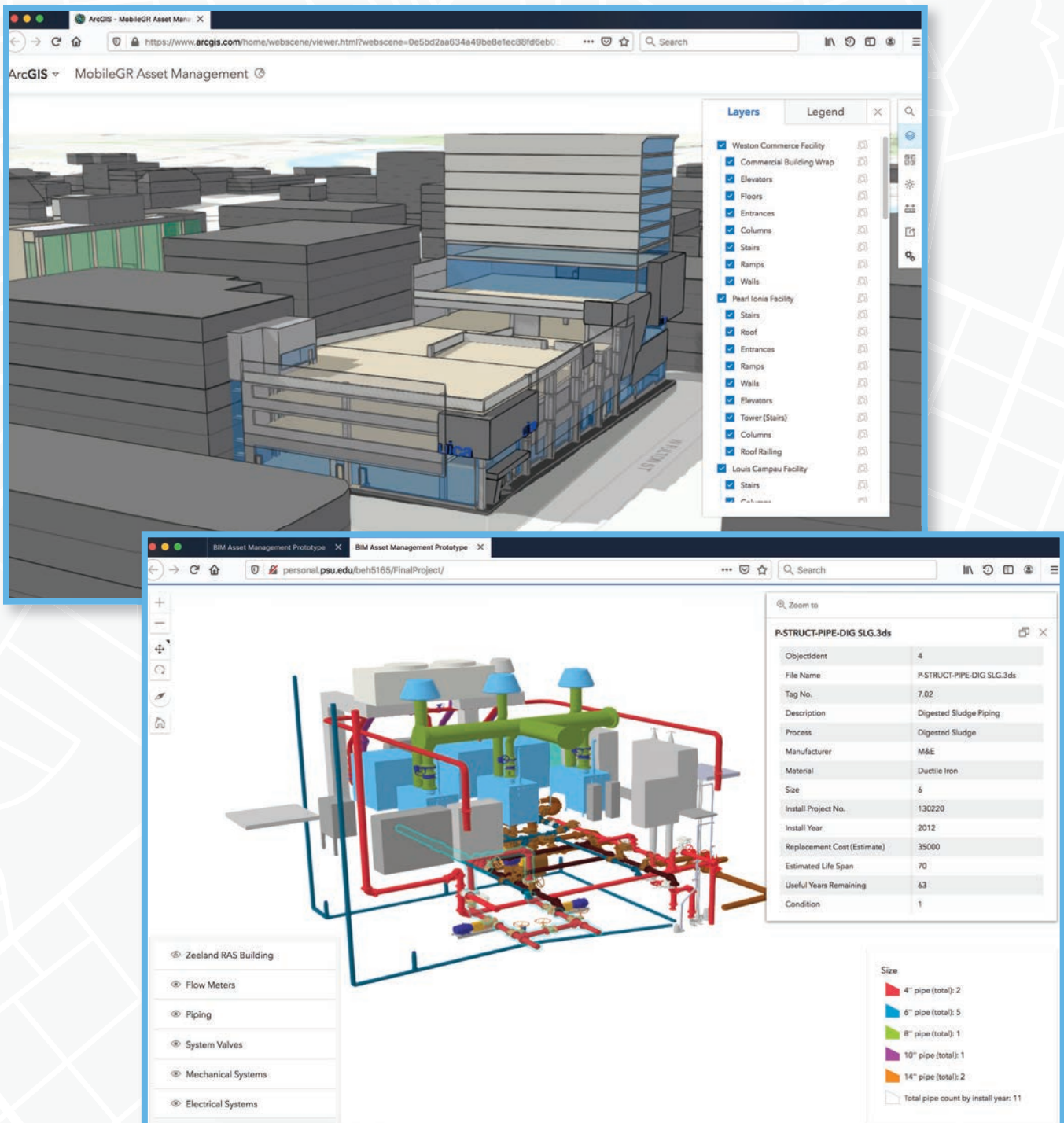
CUSTOM 3D ASSET MANAGEMENT APPLICATIONS

Enhance your Asset Management capabilities with a custom-built BIM application.

Quickly view and access information about your infrastructure in a 3D environment, giving you an even better understanding of how all the pieces fit together.

Access critical information anytime, anywhere, using a desktop or mobile device.

Create custom queries to quickly get counts and conditions of specific parts of infrastructure and view locations with a “real world” feel.



PARTNER WITH US

No matter where your organization falls in this spectrum, **Moore+Bruggink** has the experience, knowledge, and readiness to transform your workflows with GIS. Reach out to us today to hear more about how we can implement or upgrade your system and learn more about how GIS is changing the way people manage their assets.



CONTACT

BRETT HEIST | GIS ANALYST

616-226.8252 direct | bheist@mbce.com

MBCE.COM

Moore+Bruggink is experienced in the entire spectrum of civil engineering. We specialize in providing services in both private and public sectors. We provide planning, surveying, design, and construction engineering services for streets, highways, storm sewer, drainage, flood control, sanitary sewer treatment and collection, water treatment, storage and distribution, sidewalks, bridges, land development, site development, condominiums, downtown renovation, aviation facilities, parks, recreation, and landscaping.

Moore+Bruggink is also committed to keeping our water resources clean and usable. From the handling of storm water, cleaning wastewater, and the treatment, storage and distribution of drinking water, we help to cost effectively and sustainably use and treat our most important resource.



CREATING COMMUNITY SINCE 1956

